

Microsoft® Office

Deutsche SharePoint® Konferenz 2008

19. – 21. Feb. 2008
Frankfurt am Main

Connect. Collaborate. Share.



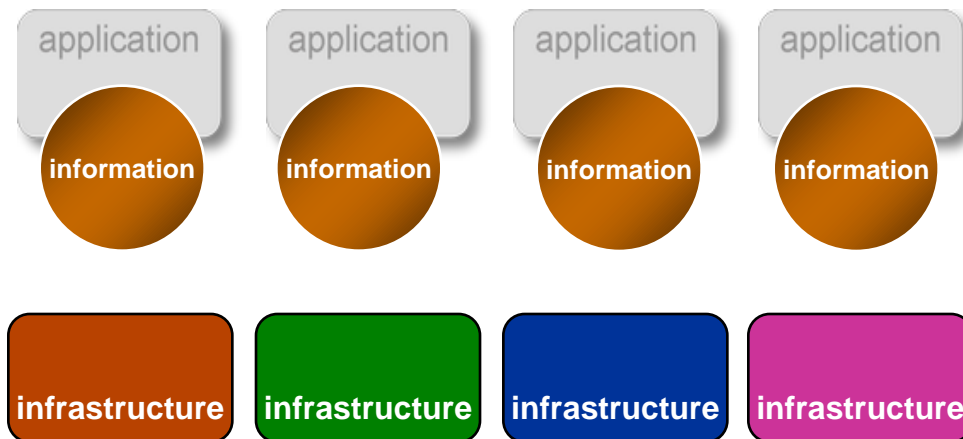
Integration von EMC Documentum mit SharePoint 2007

Karsten Eberding
Alliance Manager
EMC

Haben Sie eine Information Management Strategie?

Information ist der höchste Wert im Unternehmen

Aber wird oft nicht so behandelt



Hohe Kosten

Geringe Auslastung, hoher Aufwand

Unbekannte Risiken

Sicherung gegen Verlust und unauthorisierten Zugriff

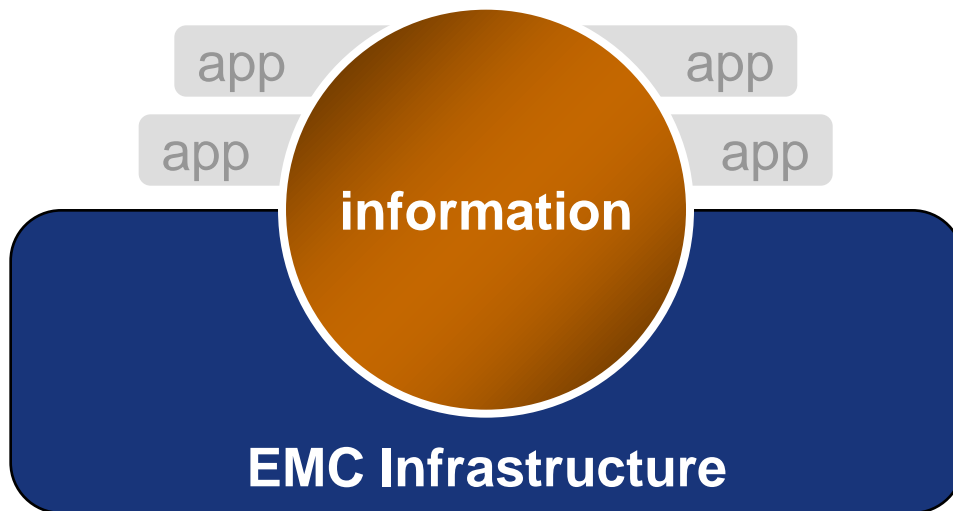
Fehlende Innovation

Nutzung der Informationen für neue Geschäftsfelder

Aufbau einer Information Infrastructure

Information ist der höchste Wert im Unternehmen

Handeln Sie danach !



Mit EMC Infrastruktur:

Geringere Kosten

Bessere Auslastung, geringerer Aufwand

Weniger Risiken

Schutz vor Verlust und Ausfall,
Sicherheit gegen unberechtigten Zugriff

Mehr Innovation

Neue Entwicklungen und Geschäftsfelder
durch bessere Informationen

Shared Information Management Services:

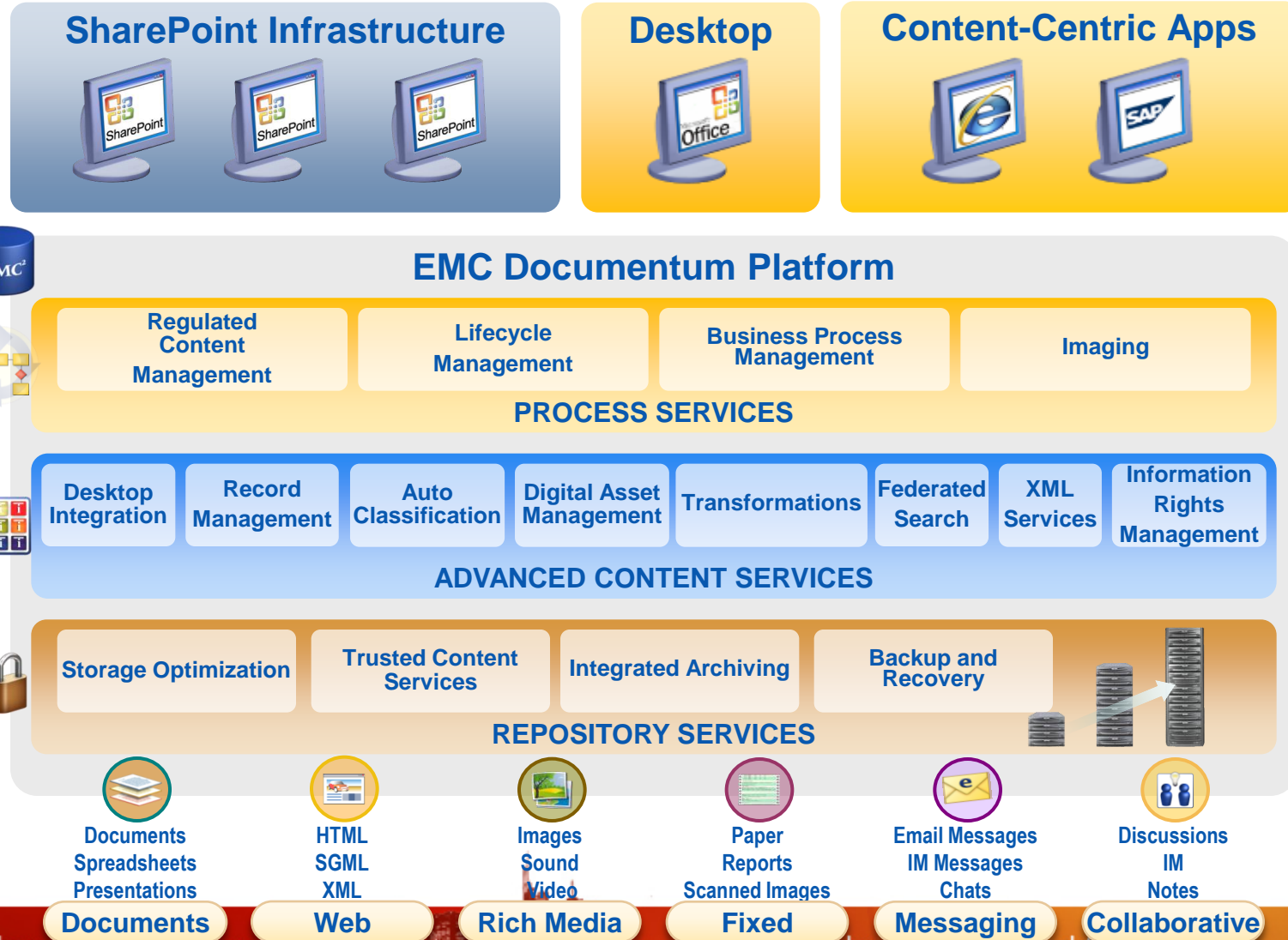
store intelligently

protect against loss and misuse

optimize infrastructure, management and service levels

leverage information assets to create new value

EMC Documentum und SharePoint



Beispiele für ECM Anwendungen



**Personal &
Team Productivity**



**Cost of
Processing
Transactions**



**Customer
Experience &
Service**



**Long term
Preservation
of Content**

Blended Applications

CONTENT-RICH APPLICATIONS

Collaborative



Transactional



Interactive



Archival



EMC DOCUMENTUM PLATFORM

MULTIPLE CLIENT ACCESS POINTS

RICH SET OF CONTENT AND PROCESS SERVICES

ALL CONTENT TYPES



EMC²



Collaborative Anwendungen

Fokus	Team Work, Knowledge Management
Beispiele	Forschung und Entwicklung, Projekt Management, Angebotserstellung, Kundenprojekte
Content Typen	Office Dokumente, Email, Diskussionen, Projektpläne
Volumen	niedrig
Microsoft	Collaboration, Autorenumgebung, Projektmanagement
EMC	Repository und Archivierung



Collaborative



Transactional



Interactive



Archival



Zugriff auf Documentum in SharePoint

Contract Systems, Inc. > Contract Library System

Welcome System Account

Contract Library System

This Site: Contract Library Sys

Home Site Actions

View All Site Content

Documents

- Shared Documents

Lists

- Calendar
- Tasks

Discussions

- Team Discussion

Sites

- People and Groups
- Recycle Bin

Content Library

Documentum Folders (Corporate Docbase)

/MossCab/Shared Reference Files/Reference Help Refresh

Type	Name	Title	Modified
Word Document	Ad Campaign Guidelines.doc	Corporate Guideline Master	06/04/2007 01:14 PM
Word Document	Alpha S Contract.doc	Renewal for 2007	03/27/2007 11:07 AM
PowerPoint Presentation	Briefing Materials 30107.ppt		03/19/2007 11:34 AM
Excel Spreadsheet	Cost Analysis XBR.xls	Original XBR analysis	03/30/2007 01:10 PM
Word Document	Fin2007 Application Requirements...		03/27/2007 10:42 AM
Word Document	MaxExpose Bid Contract.doc	Template management	03/30/2007 01:11 PM
Word Document	MemBrane Systeme Contract.doc	Contract MBS 05-3	06/04/2007 01:14 PM
Word Document	OSHA Pla	OSHA H5-44 Procedures	03/30/2007 01:12 PM
Word Document	P503 Sys	Law for Carpa	03/30/2007 01:10 PM
Word Document	XBR Syst		03/27/2007 11:09 AM

Announcements

XBR Contract update 3/27/2007 8:17 AM
by System Account
Customer meeting on May 10th when we will need the final contract back from Legal and AP.

- Add new announcement

Links

- Learn more about EMC integrations for SharePoint
- Download the whitepaper on SharePoint and Documentum integration
- Add new link

You are viewing items 1-10 out of 10.
Previous Page

Integration und Zugriff auf EMC Documentum direkt aus der SharePoint Oberfläche

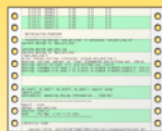


Transaktionsorientierte Anwendungen

Fokus	effiziente Bearbeitung von Vorgängen, Formularen, Scans
Beispiele	Rechnungsbearbeitung, Schadensbearbeitung
Content Typen	Gescanntes Papier, Fax, Reports, Formulare (Papier oder elektronisch)
Volume	hoch
Microsoft	SharePoint UI, Formulardesign und Darstellung
EMC	Captiva Scanning & Imaging, Erkennung, BPM (Analyse, Simulation)



Transactional



Collaborative



Interactive



Archival



Transaktionsorientierte Anwendungen

Input

Scanners & Faxes



App Output



Paper & eForms



Process

Analyze



Deploy



Optimize

Monitor



Execute



Transactional



Deliver

Portal



Data & Documents



Business Apps



Collaborative



Interactive



Archival



Documentum Inbox in SharePoint

Home - Preston Corporation - Microsoft Internet Explorer

File Edit View Favorites Tools Help

Back Forward Stop Home Search Favorites

Address http://ps2007b2/ProjectServer/default.aspx Go

Links Home - Project Web Access

Preston Corporation Welcome System Account |

Preston Corporation This Site

Home Computer Skills Cabinet Browser Documentum Inbox Site Actions

Documentum Inbox

New Actions Settings View: Show All (Attachments)

Priority	Subject	From	Received	Status	Repository
	Management Approval	O12B-SERVER\ESamuels	7/5/2006 2:00 PM	Running	Engineering
	Compliance Process	O12B-SERVER\ESamuels	7/7/2006 11:50 AM	Finished	Engineering
	Sharepoint Integration	O12B-SERVER\MZimring	9/25/2005 8:00 AM	Running	Engineering
	Nylon Polymer	O12B-SERVER\PMorales	7/16/2006 1:24 PM	Running	Engineering
	Webmail	O12B-SERVER\DSmith	11/2/2005 5:16 PM	Running	Engineering

My Work

New Actions Go To Settings View: My Assignments

Reassign Work Self-assign Team Tasks Delete Import Timesheet Print

<input checked="" type="checkbox"/>	Task Name	Start	Finish	Progress	Resource Name
<input checked="" type="checkbox"/>	Send Comment				

Recalculate Save All Submit Selected

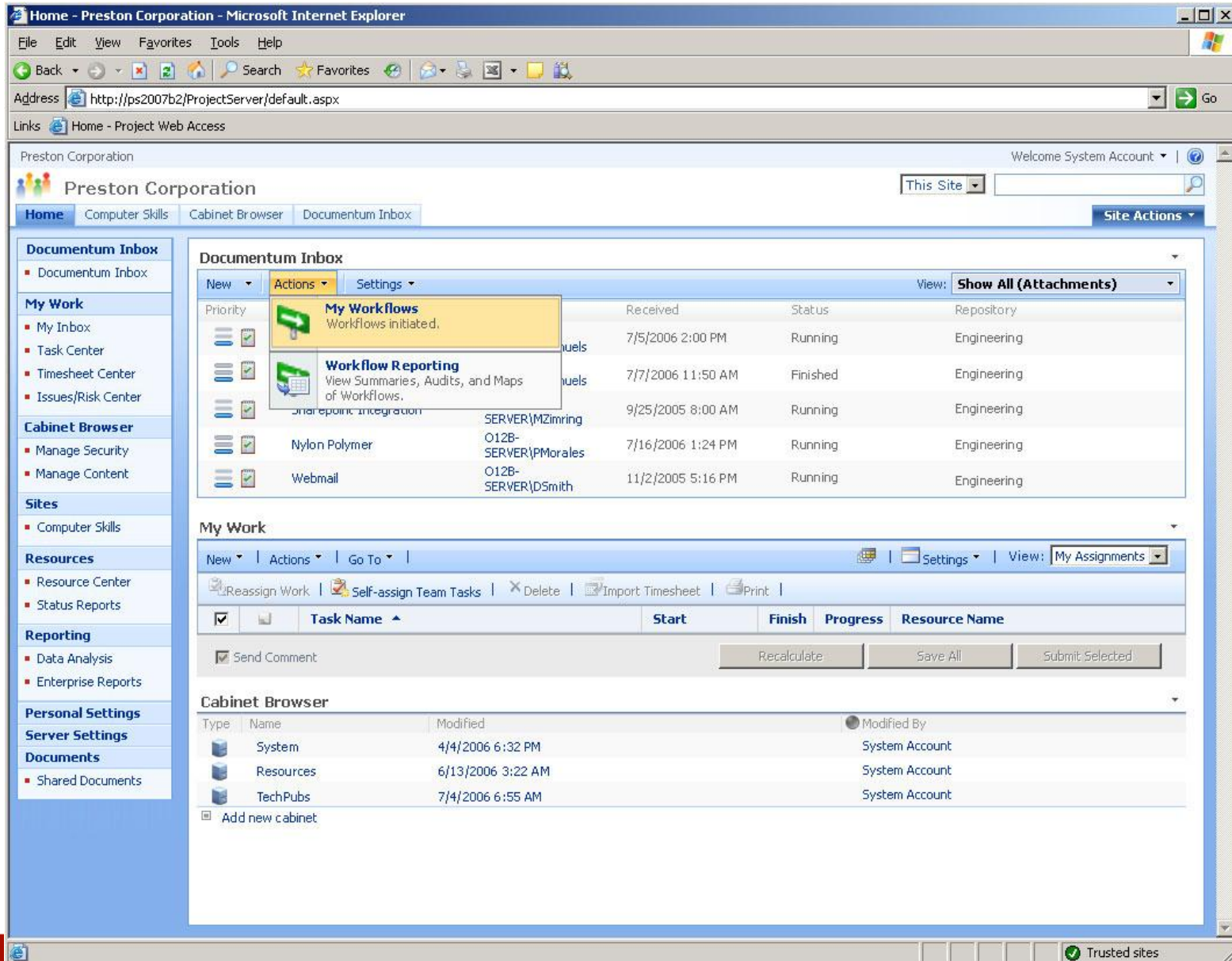
Cabinet Browser

Type	Name	Modified	Modified By
	System	4/4/2006 6:32 PM	System Account
	Resources	6/13/2006 3:22 AM	System Account
	TechPubs	7/4/2006 6:55 AM	System Account

Add new cabinet

Trusted sites

Documentum Inbox in SharePoint



Home - Preston Corporation - Microsoft Internet Explorer

Address http://ps2007b2/ProjectServer/default.aspx

Preston Corporation Welcome System Account

Documentum Inbox

Documentum Inbox

My Workflows
Workflows initiated.

Priority	My Workflows	Received	Status	Repository
	Workflows initiated.	7/5/2006 2:00 PM	Running	Engineering
	Workflow Reporting View Summaries, Audits, and Maps of Workflows.	7/7/2006 11:50 AM	Finished	Engineering
	Integration	9/25/2005 8:00 AM	Running	Engineering
	Nylon Polymer	7/16/2006 1:24 PM	Running	Engineering
	Webmail	11/2/2005 5:16 PM	Running	Engineering

My Work

Task Name	Start	Finish	Progress	Resource Name
System	4/4/2006 6:32 PM			System Account
Resources	6/13/2006 3:22 AM			System Account
TechPubs	7/4/2006 6:55 AM			System Account

Cabinet Browser

Type	Name	Modified	Modified By
	System	4/4/2006 6:32 PM	System Account
	Resources	6/13/2006 3:22 AM	System Account
	TechPubs	7/4/2006 6:55 AM	System Account

Documentum Task Management

Home - Preston Corporation - Microsoft Internet Explorer

File Edit View Favorites Tools Help

Back Forward Stop Home Search Favorites

Address <http://ps2007b2/ProjectServer/default.aspx> Go

Links Home - Project Web Access

Preston Corporation Welcome System Account

Preston Corporation This Site

Home Computer Skills Cabinet Browser **Documentum Inbox** Site Actions

Home > Documentum Inbox > Task: Management Approval

Task: Management Approval

Close

Edit Item Comments Progress Workflows

Title	Management Approval
Priority	(2) Normal
Status	Running
% Complete	
Assigned To	O12B-SERVER\D5mith
Description	Required workflow for product definition and release.
Start Date	06/15/2006
Due Date	

Version 1.3
Created at 6/15/2006 9:33 AM by O12B-SERVER\D5mith
Last Modified at 7/7/2006 11:50 AM by O12B-SERVER\D5mith

New Actions Settings View: **All Documents**

Name	Format	Modified
Application Requirements.doc	Microsoft Word Document	7/5/2006 2:00 PM
Sales Contract.pdf	Adobe PDF	7/1/2006 9:51 AM
System Diagram 42a.gif	GIF image	6/30/2006 1:12 PM

Close

Trusted sites



Interaktive Anwendungen

Fokus	Elektronische Medien und Dienste
Beispiele	Marketing / Werbung, Web Auftritt, Unterhaltung
Content Typen	Web Content, Publikationen, Bilder, Video
Volume	mittel – hoch (mit Bildern und Videos)
Microsoft	Portal Umgebung, einfaches Web Publishing
EMC	Web Content Management mit Digital Asset Management

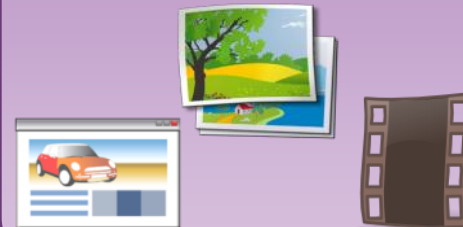
Collaborative



Transactional



Interactive



Archival





Archivierung

Fokus	Langfristige Erhaltung unveränderlicher Inhalte
Beispiele	Archivierung gescannter Dokumente, SAP Archiving, Email archiving
Content Typen	Email, SAP Daten und Dokumente, Reports, File systeme, gescannte Images
Volume	sehr hoch
Microsoft	Portal und Navigation
EMC	Revisionsicherheit, Retention Management, Storage Optimierung

Collaborative



Transactional



Interactive



Archival



SAP



EMC Documentum / SharePoint 2007 Integrationsprodukte

Archive Services for SharePoint



- Archivierung von SharePoint Content in EMC Documentum
 - Übertragung von Archivdaten zur langfristigen revisionssicheren Aufbewahrung
 - Retention Policy Services steuern Löschung oder Migration

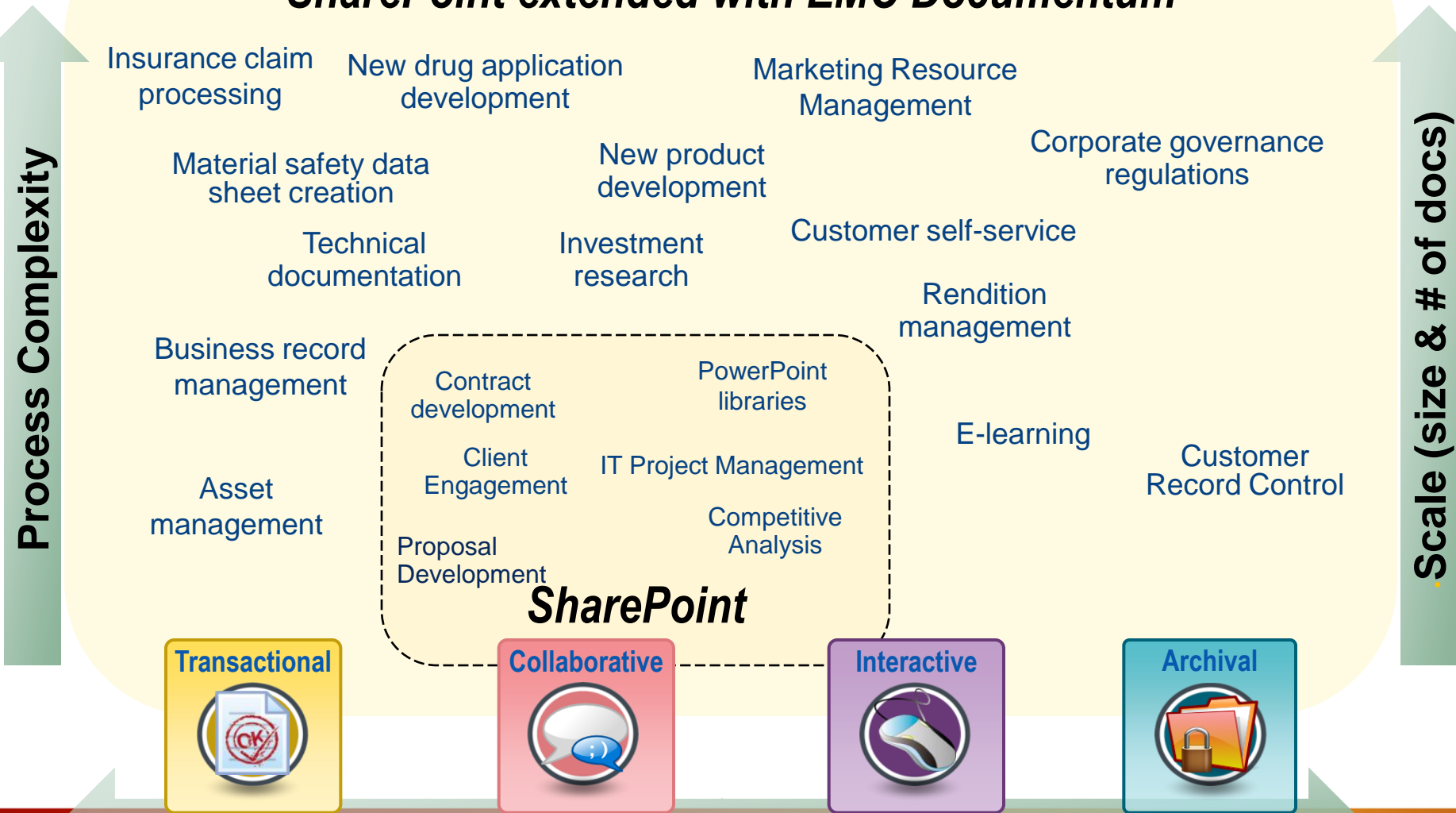
Content Services for SharePoint



- Zugriff auf Documentum aus SharePoint heraus, über Documentum Web Parts:
 - Documentum Folders
 - Documentum Inbox
 - Documentum Subscriptions
 - Documentum Files
 - Documentum Favorites
 - Documentum Workflows
 - Documentum Search

EMC Documentum als unternehmensweite ECM Plattform

SharePoint extended with EMC Documentum



Vielen Dank

EMC²[®]

where information lives[®]