



Advanced SharePoint Workflow with Nintex Workflow 2007

Steve Heaney – Chief Architect
February 12th to 14th, 2007
Convention Center
Hotel Estrel, Berlin, Germany



nintex[®]

BY

obs

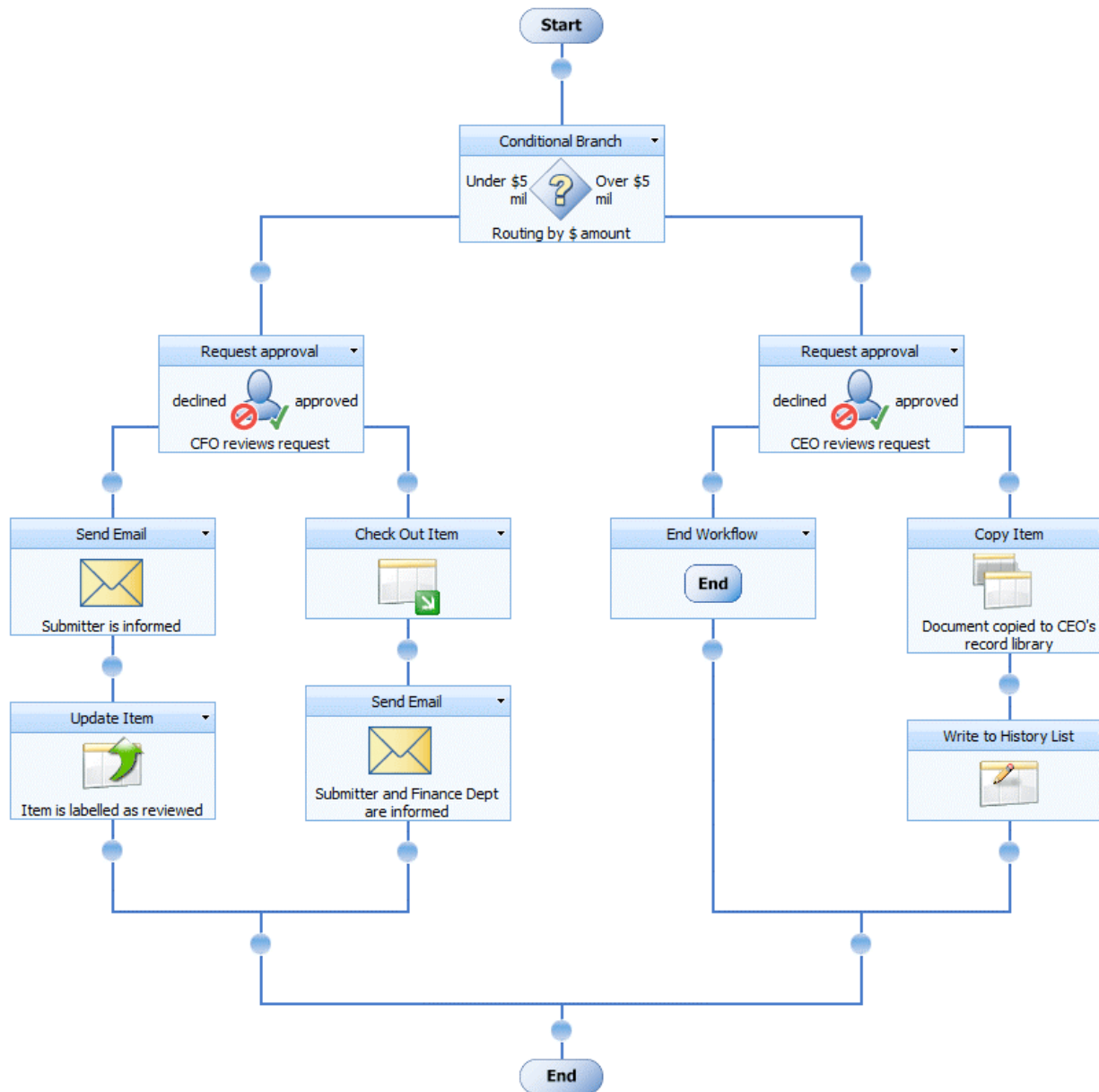




nintex[®]

Workflow 2007

Web Based Workflow Management





nintex[®]

Workflow 2007

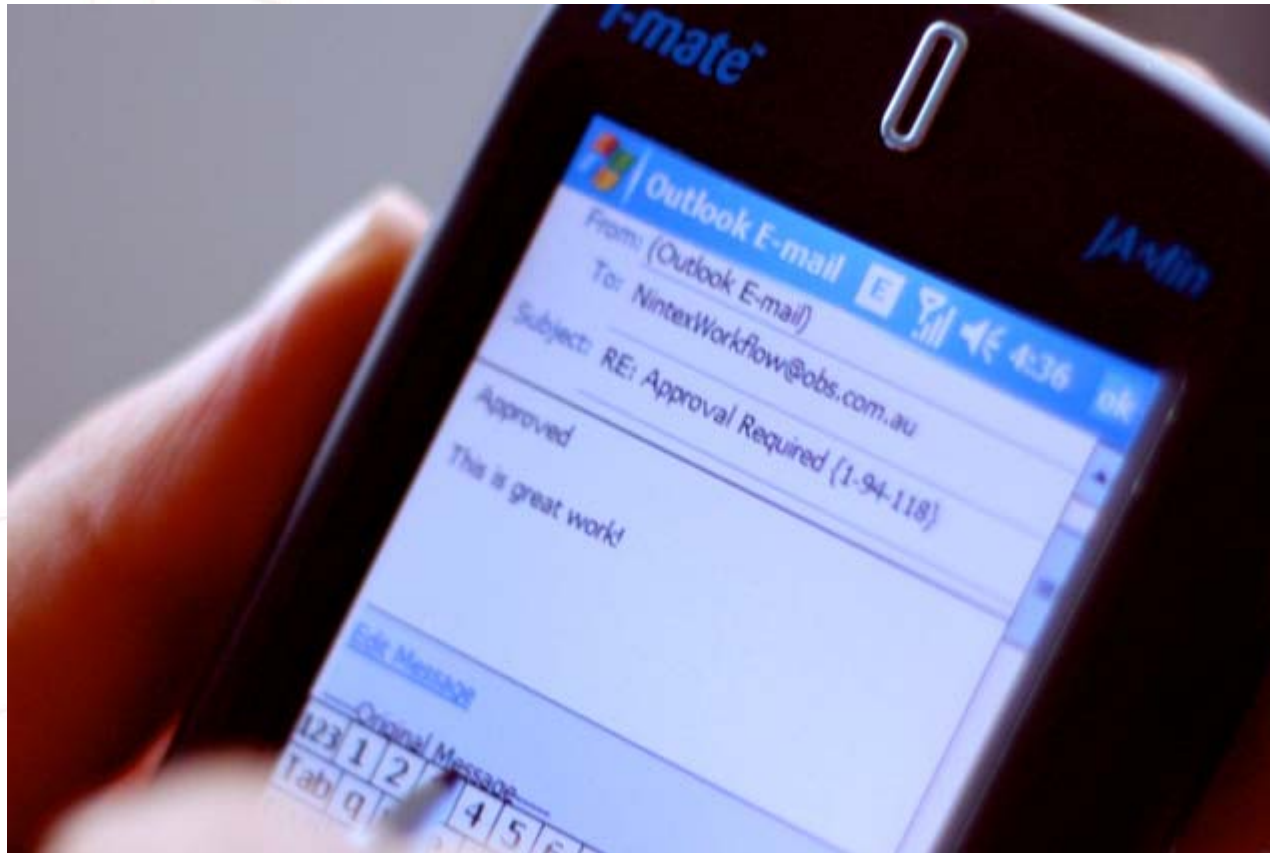
Demo



Microsoft[®]

**Office SharePoint[®]
Server 2007**

Advanced Workflow Features



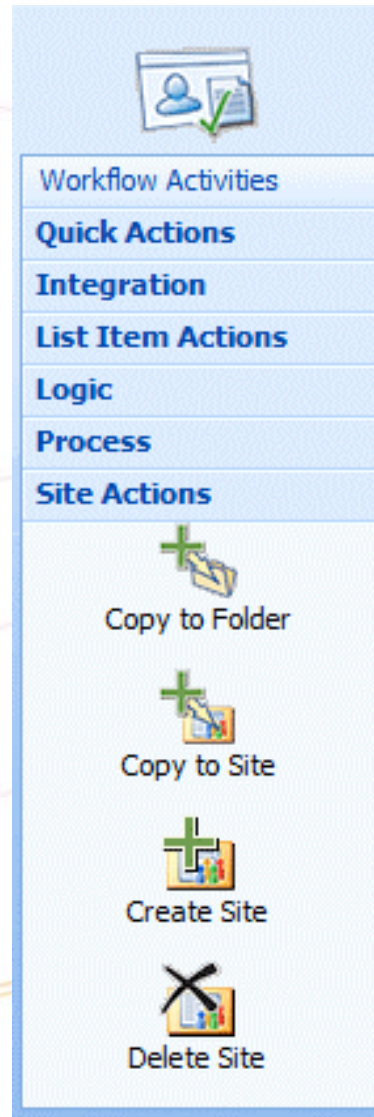


nintex[®]

Workflow 2007

Demo

Automate SharePoint Actions



The image shows a vertical menu of SharePoint actions. At the top is an icon of a document with a person and a checkmark. Below it are several menu items: 'Workflow Activities', 'Quick Actions', 'Integration', 'List Item Actions', 'Logic', 'Process', and 'Site Actions'. The 'Site Actions' section is expanded, showing four options: 'Copy to Folder' (with a plus and folder icon), 'Copy to Site' (with a plus and document icon), 'Create Site' (with a plus and site icon), and 'Delete Site' (with a minus and site icon).

- Workflow Activities
- Quick Actions
- Integration
- List Item Actions
- Logic
- Process
- Site Actions
 - Copy to Folder
 - Copy to Site
 - Create Site
 - Delete Site



nintex[®]

Workflow 2007

Demo



Microsoft[®]

**Office SharePoint[®]
Server 2007**

Deep Integration with SharePoint 2007

WSS Portal > Leave Requests
Leave Requests

Share a document with the team by adding it to this document library.

New | Upload | Actions | **Settings**

Type

There are no items to show in this view of

ified

e a new item, click "New" or "Upload" above.

- Create Column**
Add a column to store additional information about each item.
- Create View**
Create a view to select columns, filters, and other display settings.
- Document Library Settings**
Manage settings such as permissions, columns, views, and policy.
- Edit Workflows**
Modify workflows for this list or library.
- Create Workflow**
Define a new workflow using the Nintex Workflow designer.

View All Site Content

Documents

- Shared Documents

Lists

- Calendar
- Tasks

Discussions

- Team Discussion

Sites

People and Groups

Recycle Bin



nintex[®]

Workflow 2007

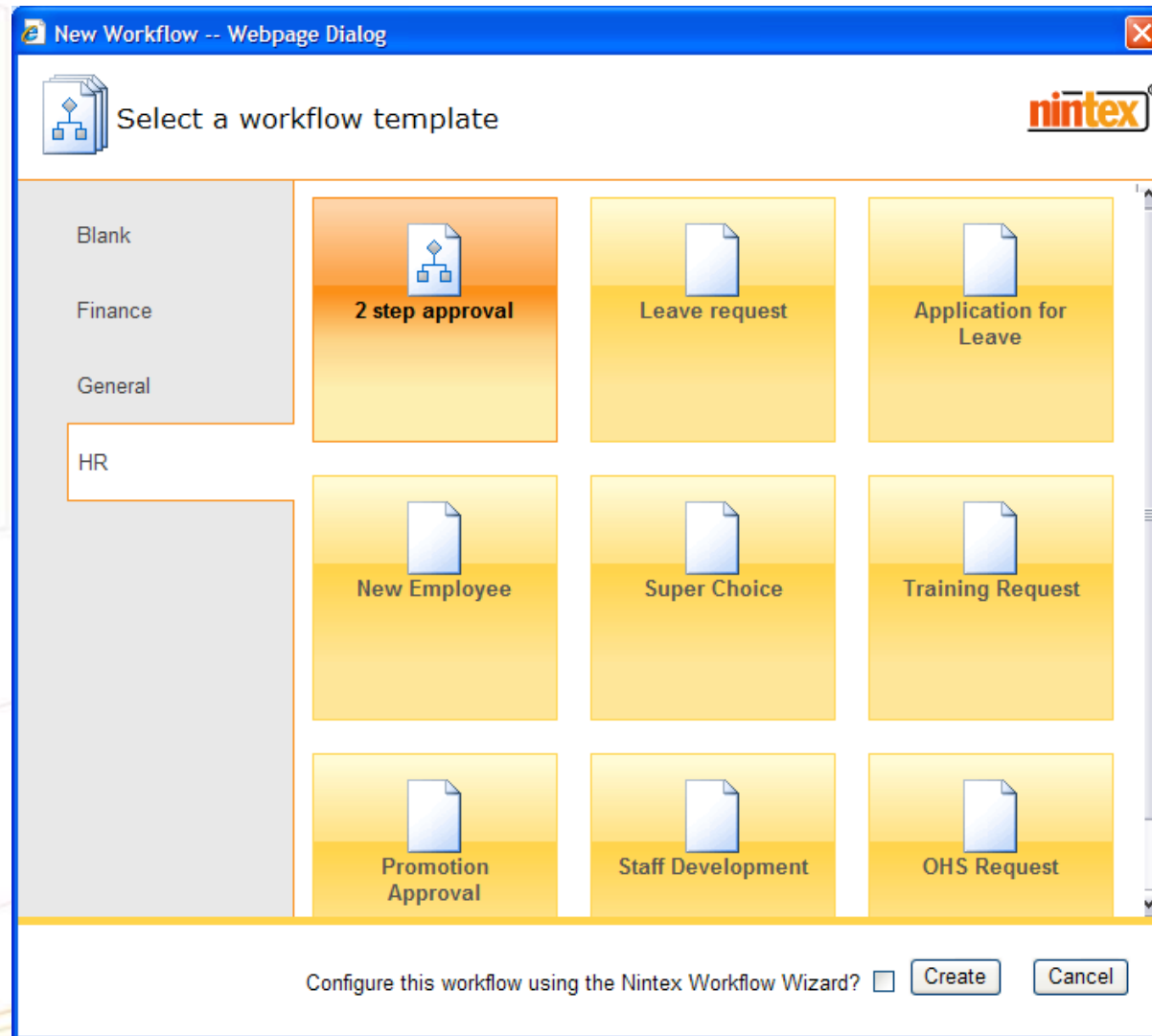
Demo



Microsoft[®]

**Office SharePoint[®]
Server 2007**

Predefined Templates





nintex[®]

Workflow 2007

Demo





Microsoft[®]

**Office SharePoint[®]
Server 2007**

Extensible Framework

A vertical menu with a blue background and white text. The menu items are: Workflow Activities, Quick Actions, Integration, Custom - SAP (with SAP logo), Custom - Webservice (with globe icon), List Item Actions, Logic, Process, Site Actions, and My Snippets. The menu is positioned in the center of the slide, with a background of a hallway with windows and a large empty box on the right.

- Workflow Activities
- Quick Actions
- Integration
-  Custom - SAP
-  Custom - Webservice
- List Item Actions
- Logic
- Process
- Site Actions
- My Snippets



nintex[®]

Workflow 2007

Demo

Technical Features

- Supports both MOSS and WSS
- Uses Windows Workflow Foundation
- No Client Required
- Templates available Online

Business Benefits

- Automate Business Processes – Quick & Easy
- Empower business to create & manage workflow
- Lower IT Overhead
- No Client Software Needed

Other Nintex Products



Free Upgrade to:





nintex[®]

Workflow 2007

www.nintex.com

*Come and see us
in the partner expo*

Sweepstake

Complete your Feedback form
and have a chance
to win a Zune!*



* English US version